

Safety Bulletin

30108A01

Spiromatic mask with Savox 100

LIDINGÖ July 03, 2008

ANNOUNCEMENT

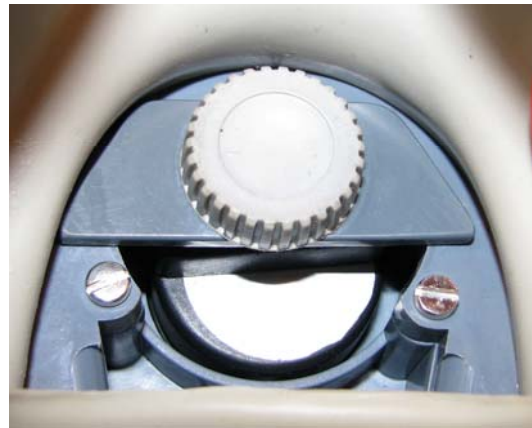
Important information regarding attachment of the Savox 100 unit in the Spiromatic full face mask.

APPLIES TO

Spiromatic full face mask with Savox 100.

DESCRIPTION

The Savox 100 unit is mounted in the Spiromatic full face mask with a plastic mounting plate and screw with a thumb wheel. We have received a few reports where this mounting plate has broken and that small piece of the plate has fallen into the breathing valve. This can result in functional failure of the breathing valve.



ACTION

- Check that there are no cracks in the mounting plate. If cracks are detected, the mounting plate with screw must be replaced.
- When mounting the Savox 100 unit the following shall be noted:
 - The mounting plate shall be horizontally aligned (as shown in the picture above). This is important so that the plate does not rest upon any of the two screw heads in the full face mask.
 - Do not over-tighten the thumb screw, since this will cause unnecessary stress to the mounting plate.

INTERSPIRO GROUP

Lidingö, Sweden